

2.0 Login and Registration

To access DMS, login to **allianceonline PERSONAL** using your account's login name, user ID, and PIN. The login page for **allianceonline PERSONAL** is shown on Figure 2.1.

2.1 allianceonline PERSONAL Login Page

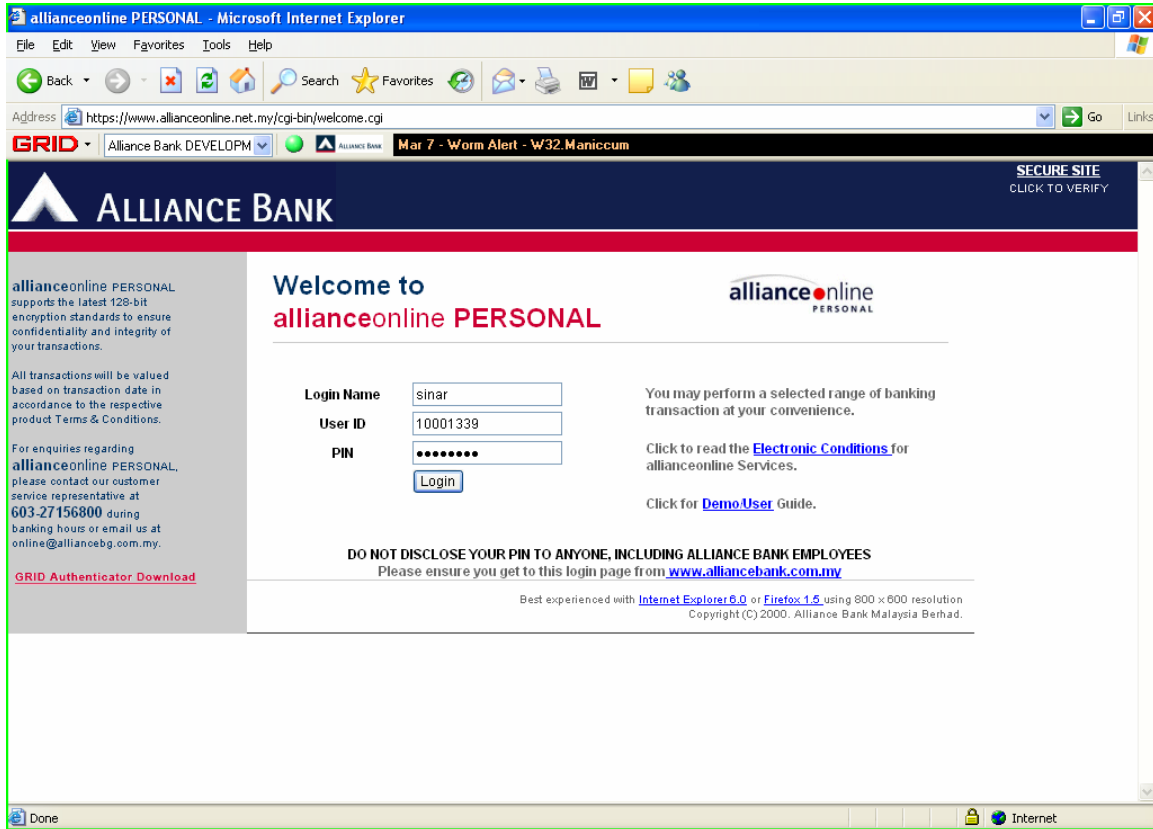


Figure 2.1: allianceonline Login Page

*Please note that GRID Authenticator is required by the accessing computer to gain access to **allianceonline PERSONAL** services. GRID Authenticator is a browser toolbar add-on for Microsoft Internet Explorer (version 5.5 and above) or Firefox (version 1.5 and above). You may download and install GRID Authenticator by clicking at the GRID Authenticator Download link at the lower left hand side of the **allianceonline PERSONAL** login screen.*

GRID Device Management User Guide

2.2 First Time Device Management Code Registration

During login to **allianceonline PERSONAL**, the system will verify with The GRID for first time registration. If it is the first time you are using GRID, it will prompt you with the page shown as Figure 2.2. below:

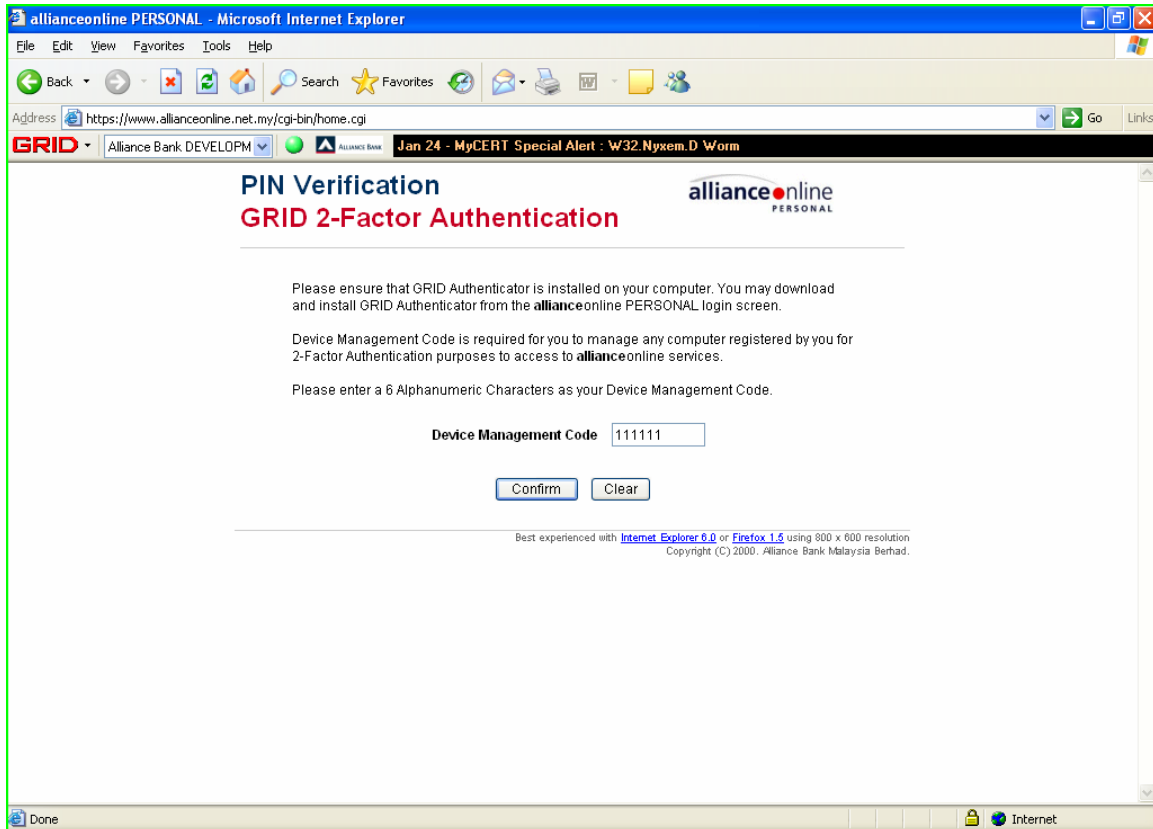


Figure 2.2: Input a Device Management Code

This screen allows you to input a Device Management Code, equivalent to a passcode, for future access to DMS pages.

Note: The Device Management Code is required for user to login and gain access to Device Management Service functions.

GRID Device Management User Guide

2.3 allianceonline PERSONAL Device Management Page

After you have successfully login to the allianceonline service, by clicking on the Device Management menu selection located on the left panel, you will come to the Device Management Service access page

(Figure 2.1.3) allianceonline Device Management Page

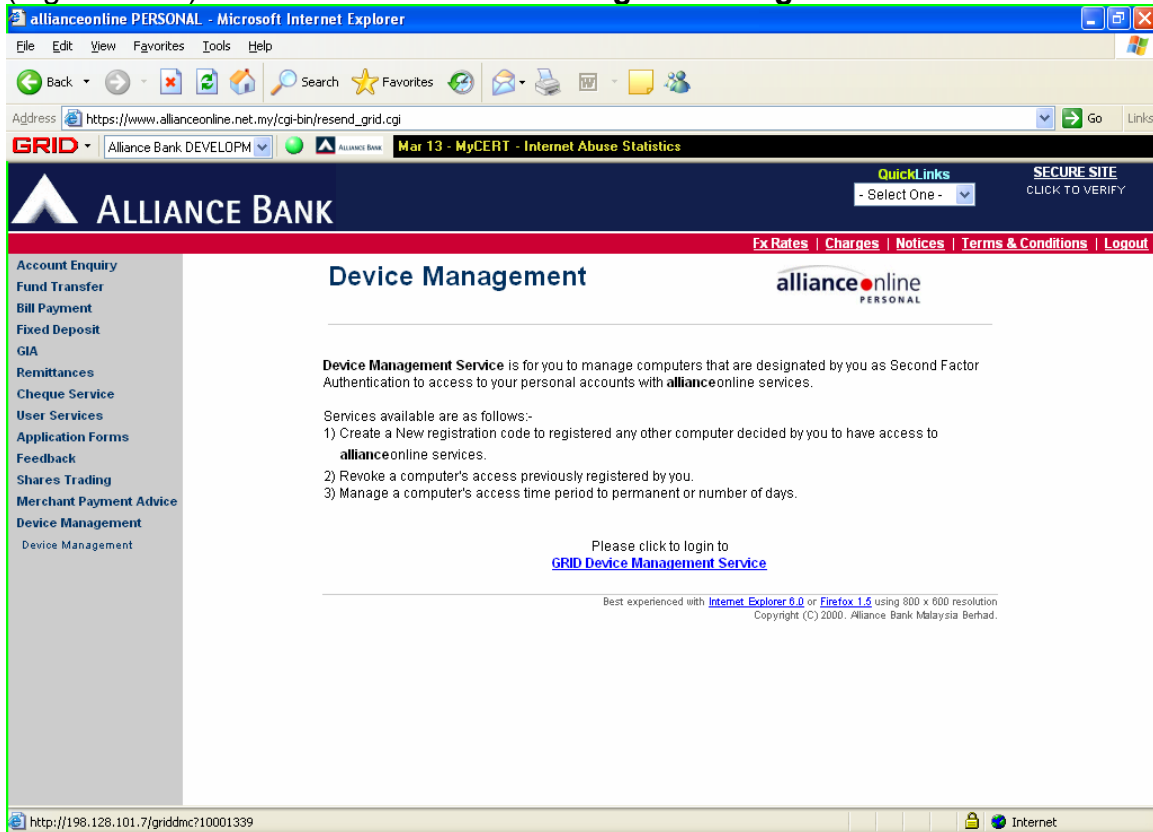


Figure 2.3: allianceonline Device Management Page

This page provides a brief explanation on Device Management Service. To proceed, click on GRID Device Management Service link; which will opens up the Device management login page on a new window

2.4 GRID Device Management Service Login Page

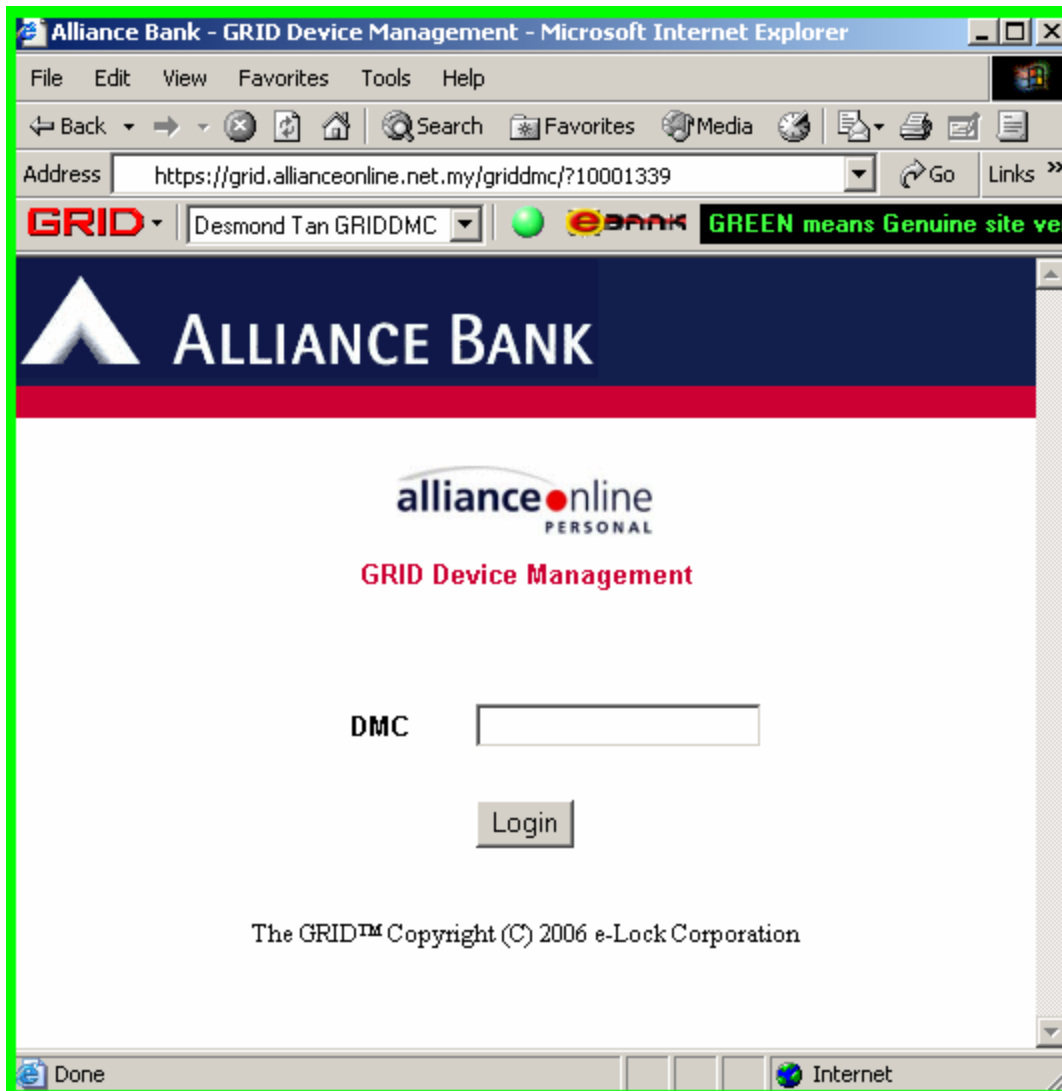
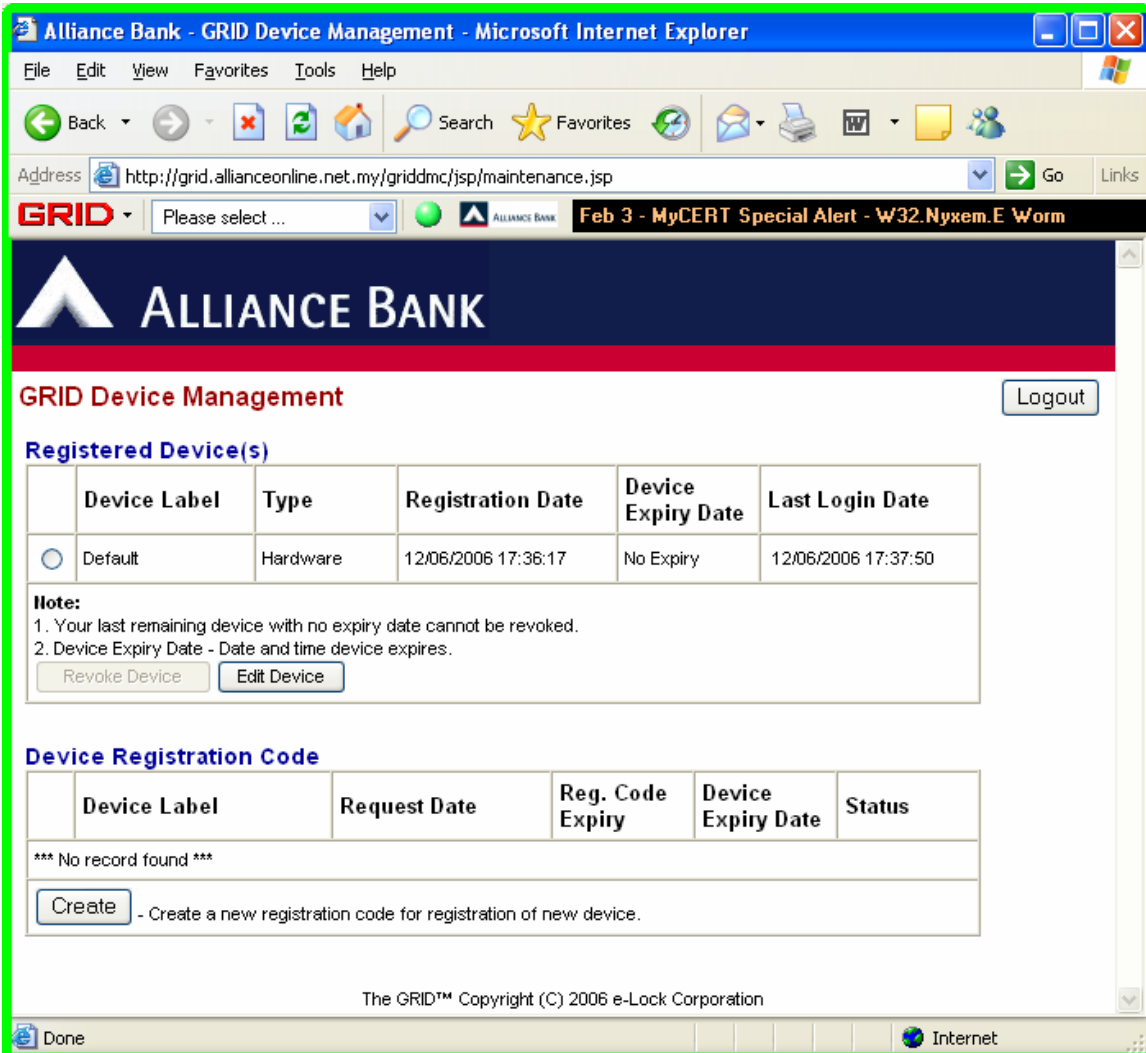


Figure 2.4: GRID Device Management Login Page

The user is required to key in the Device Management Code (DMC) which was provided by you at First Time registration with the GRID (Refer to section 2.2 **First Time Device Registration**).

GRID Device Management User Guide

2.5 GRID Device Management Service Main Page



Registered Device(s)

	Device Label	Type	Registration Date	Device Expiry Date	Last Login Date
<input type="radio"/>	Default	Hardware	12/06/2006 17:36:17	No Expiry	12/06/2006 17:37:50

Note:
 1. Your last remaining device with no expiry date cannot be revoked.
 2. Device Expiry Date - Date and time device expires.

Device Registration Code

	Device Label	Request Date	Reg. Code Expiry	Device Expiry Date	Status
*** No record found ***					

- Create a new registration code for registration of new device.

The GRID™ Copyright (C) 2006 e-Lock Corporation

Figure 2.5: GRID Device Management Main Page

Upon a successful login to GRID Device management functions, the main page consist of two major sections, Registered Device and Device Registration Code will show. Please note that the Default device is the First device registered with GRID.